



# ROYAL SPIRIT

## GROUP

DE.M.CO VINA Presentation



---

## ABOUT ROYAL SPIRIT



### A global family of experts in fashion and supply chain management

Royal Spirit Group, headquartered in Hong Kong, is a group of market-leading companies that are specialists in the design, production and exportation of fashion apparel and accessories for major labels worldwide.

The combination of wholly owned manufacturing facilities as well as strategic partnerships across Asia allows the group to deliver a broad range of exclusive merchandise at reasonable price points.

### Royal Spirit Group is

- A group with over 30 years' experience
- A global workforce that is 2,200 employees strong
- Producing luxury fashion pieces for premium and contemporary brands
- As well as quality products for commercial and discount markets
- Seeing businesses in Asia, Europe, and the Americas



## ABOUT DE.M.CO VINA

DE.M.CO Vina was established as a subsidiary of DE.M.CO Tunisia  
The aim of the company was to fill a void in the Far Eastern supply chain with regards to "Wet and Dry Processing".

Consequently in 2007 a garment factory and a laundry with European techniques and machines were founded under the guidance of Mr. Johan Meulebroeck a founding partner of the holding company.

Using Belgian Lapauw, Italian Tonello and Turkish Tolkar & VAV and Spanish Jeanologia machines, run by our expert Tunisian management (both for the laundry and line management) a truly European company was founded. This company is capable of handling the complex washing, which was previously only located around the Mediterranean area.

Our insistence on European techniques, dyestuffs as well as chemicals has made us the market leader whilst retaining an environmentally friendly stance.

In November 2014, the Royal Spirit Group acquired the company as part of its Vietnamese and Indochina expansion plan.



[Click to play Video](#)



---

# MANAGEMENT

DE.M.CO VINA Vietnam is run by an expert international management team under the leadership of Mr Johnny Lam.

DE.M.CO Management Team consists of selected expatriates who have been in the industry for a long time. Their extensive knowledge and skill with regard to the business gives them an edge over the competition and they are largely responsible for bringing DE.M.CO VINA to its dizzy heights, at the pinnacle of the garment manufacturing and the washing industry.

The utmost willingness of all management is to push the factory to the top while creating nice, friendly & a warm hearted environment for all workers. A remarkable team work and great understanding among them drives a path for success .

ERP is in place which gathers capacity and human resources and all production constraints which makes planning accurate



# LOCATION

## FACTORY ADDRESS :

ĐT9, Mỹ Hạnh Bắc,  
Đức Hòa, Long An,  
Vietnam

From Airport: 18km

From Tan Cang Port: 25km

From Saigon Port: 28km

From center of city: 22km

Take around 1hour to go to  
Ho Chi Minh down town

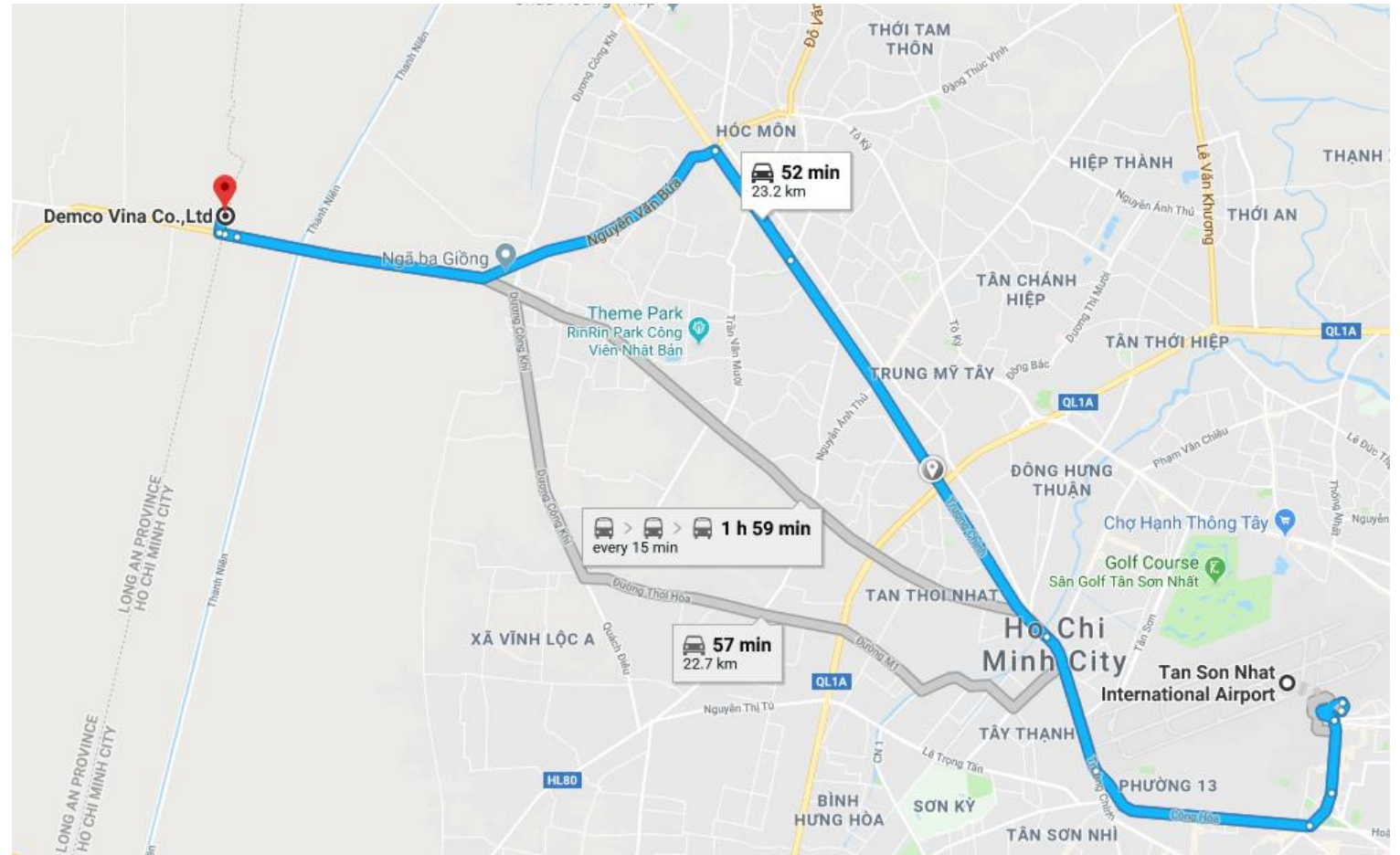
## FACTORY CONTACTS :

Telephone : 84 7 23 75 15 63

Fax : 84 7 23 75 15 66

Factory Managing Director –  
JOHNNY LAM [johnny@demcovina.com](mailto:johnny@demcovina.com)

Web Site : <http://www.demcovinavn.com>



---

## PRODUCTION LINES

Denim and casual wear manufacturing in woven fabric



Research, Styling and creation (Denim, corduroy..)



Cut and sewing: trousers, skirts, shirts and jackets of kids, men and women



All chemical washing, stone washing, over dying and garment dye, Ozone



Special treatment: whiskering, hand sanding, 3D, brushing, spraying, damaging, destruction



Finishing, pressing and packing



Shipping



---

# PRODUCTION CAPACITY

## MANPOWER

Actual 1200 employees :

Manager and staff : 100 employees

Direct and Indirect Workers : 1100 employees

## SEWING & PACKING

Actual 9 Lines :

120.000 pieces per month in 2018

## SAMPLE ROOM

5 lines x 8 Workers = 2000 pieces per month

## DRY PROCESS

Actual Capacity 250.000 pieces per month in 2018

## WASHING

Actual Capacity 250.000 pieces per month in 2018

## DYEING

Actual Capacity 50.000 pieces per month in 2018





---

## OUR CONCERNS

We invest to achieve the customer's satisfaction by providing :

- Sustainability
- Good Quality
- On time deliveries
- Competitive prices
- Production flexibility
- Short lead time
- Development capability
- Strong sourcing capacity
- Quick Response
- Innovation
- Multi language speaking

Whilst respecting international and local labor laws and focusing on protecting the environment





---

## BRANDS

USA	<ul style="list-style-type: none"><li>• True Religion</li><li>• VF Wrangler&amp; Lee</li><li>• Etcetera</li><li>• Southern Tide</li><li>• WHBM</li></ul>
Germany	<ul style="list-style-type: none"><li>• Comma</li><li>• Toni Dress</li><li>• Rosner</li></ul>
Holland	<ul style="list-style-type: none"><li>• Garcia Jeans</li></ul>
France	<ul style="list-style-type: none"><li>• Quiksilver, DC Shoes Roxy</li><li>• A.P.C</li></ul>
Sweden	<ul style="list-style-type: none"><li>• Brothers &amp; Sisters</li><li>• Neuw</li></ul>
Asia Pacific	<ul style="list-style-type: none"><li>• Vf Lee Asia Pacific</li></ul>
Australia	<ul style="list-style-type: none"><li>• Saba, Sport Craft, Portman</li><li>• Neuw</li><li>• Quiksilver</li></ul>
South America	<ul style="list-style-type: none"><li>• Vf Lee</li></ul>



---

## FABRIC SOURCES

China, Hong Kong

Turkey

Thailand

Indonesia

Pakistan

India

Sri Lanka

Vietnam



---

# Sustainability

At DEMCO sustainability is at the forefront of every decision we make. We work with our customers, suppliers, government and industry partners to manage sustainability performance to the highest levels. Our green approach to the laundry see's us at the forefront of sustainable practises throughout our business .



---

## DE.M.CO VINA – UNIT 1



Unit 1: 7500 square meters, which include:

- Head Office
- 5 Sampling Lines
- Laundry Laboratory
  - Laundry
  - Finishing



---

## DE.M.CO VINA – UNIT 2



Unit 2: 6284 square meters, which include:

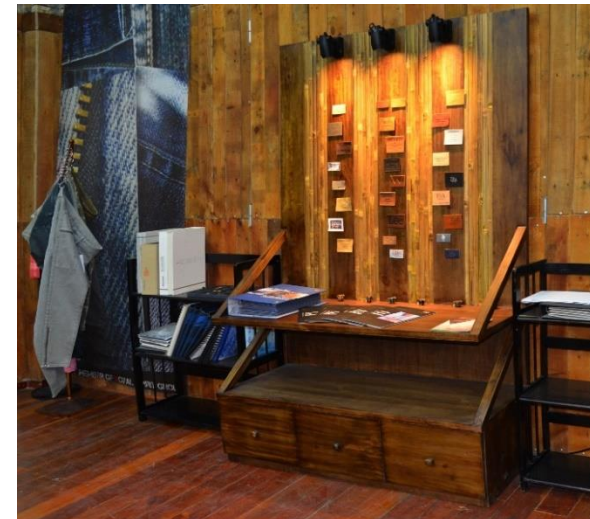
- Warehouses
- Cutting
- 12 sewing lines
- Further provision remains as
  - 6500 square meters of land is available for expansion of the facilities  
(second phase)





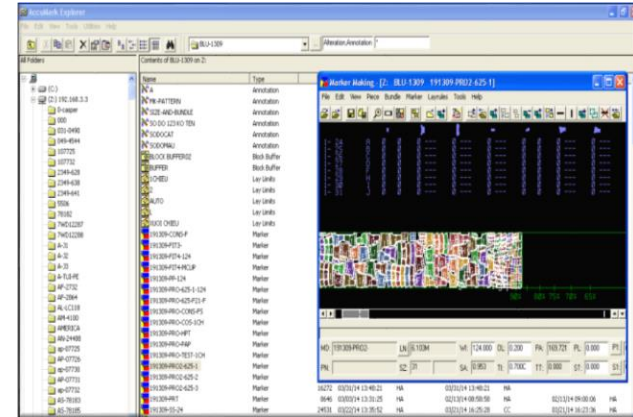
# SHOWROOM

We design, develop and create samples



# CAD ROOM

Computerize the Marker and Pattern by Gerber technology

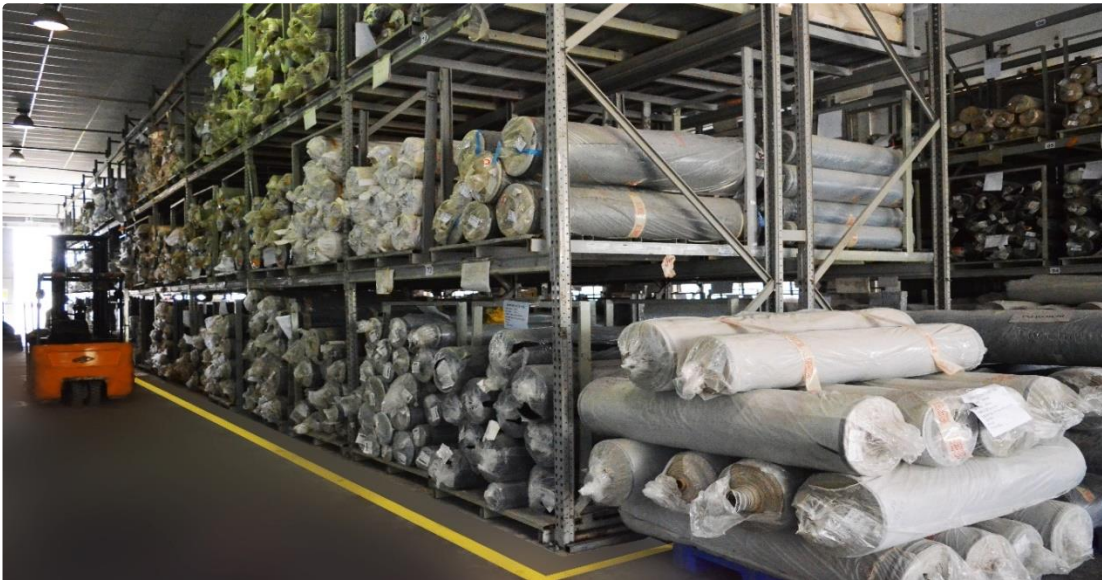




---

# WAREHOUSE

## Fabric Inspection Machines



---

## CUTTING PROCESS

Automatic Spreading



Fusing Machine





## SEWING PROCESS





---

## DRY PROCESS (LASER)

LASER VAV BLACK DRAGON 6 TABLES 2 HEAD



## DRY PROCESS (LASER)

LASER JEANOLOGIA FLEXI HS 3D





---

## DRY PROCESS





## DRY PROCESS





## WET PROCESS

G1 420 LW2 WITH NO STONE SYSTEM



E FLOW SYSTEM



---

## WET PROCESS





# GARMENT DYE PROCESS

## G1 510 HJ1 JET SYSTEM WITH CORE & BATIC SYSTEM



---

# DRYER PROCESS

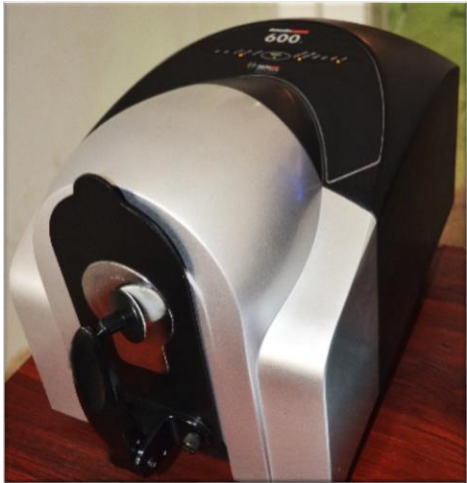
## G2 OZONE MACHINE





---

## LAB TESTING



Data color



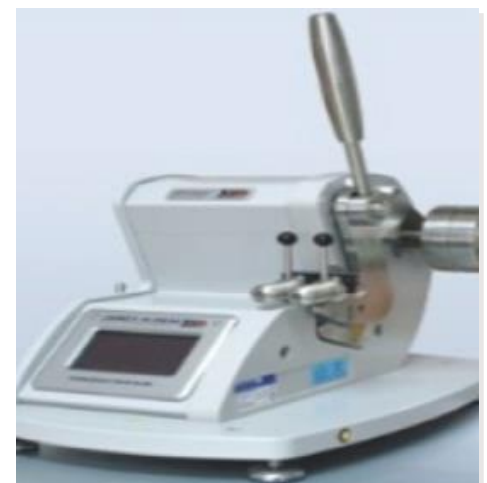
Pulling Test



Data color



Crocking Test



Tearing Test





---

## FINISHING & PACKING





---

## OUR PRODUCTS





---

## OUR PRODUCTS

### GARMENT DYE



---

## OUR PRODUCTS

### COATING EFFECTS



---

The End

